

# Frequently Asked Questions

## PARCOURS SANTÉ 18-23 PROGRAM EVALUATION

### What is the [Parcours santé 18-23](#) program?

Société Santé en français (SSF), the networks, and their partners are all working together to reach five destinations:

- Accessible programs and services
- Mobilized human resources
- Language accessibility standards
- Engaged and equipped communities
- Integration of the linguistic variable

Various strategies are being used to reach these destinations, with the end goal of ensuring that minority Francophone and Acadian communities have the capacity to live full and healthy lives in French.

The Parcours santé 18-23 program includes everything we are doing and supporting as a movement to build and strengthen capacity in communities and health systems. These efforts fall into four priority areas of action: **mental health, services at home, primary health, and community and public health.**

Our efforts at networking with the five types of partners in the pentagram,<sup>1</sup> together with knowledge mobilization, are at the heart of the French-language health movement and its actions.



### What is an evaluation framework?

All the key information for tracking and evaluating the Parcours santé 18-23 program is assembled in an [evaluation framework](#). The evaluation framework provides a description of the program along with details on the evaluation strategy. It serves as a reference for all evaluations conducted in the course of implementing the program.

### What are the evaluation themes?

Evaluation themes pertain to the overall deliverables of the Parcours santé 18-23 program. They help guide all evaluations (both formative and summative) that take place over the course of the program; they can be further developed or divided into more detailed sub-themes at the time the evaluations are conducted.

**The evaluation themes are organized as follows:**

---

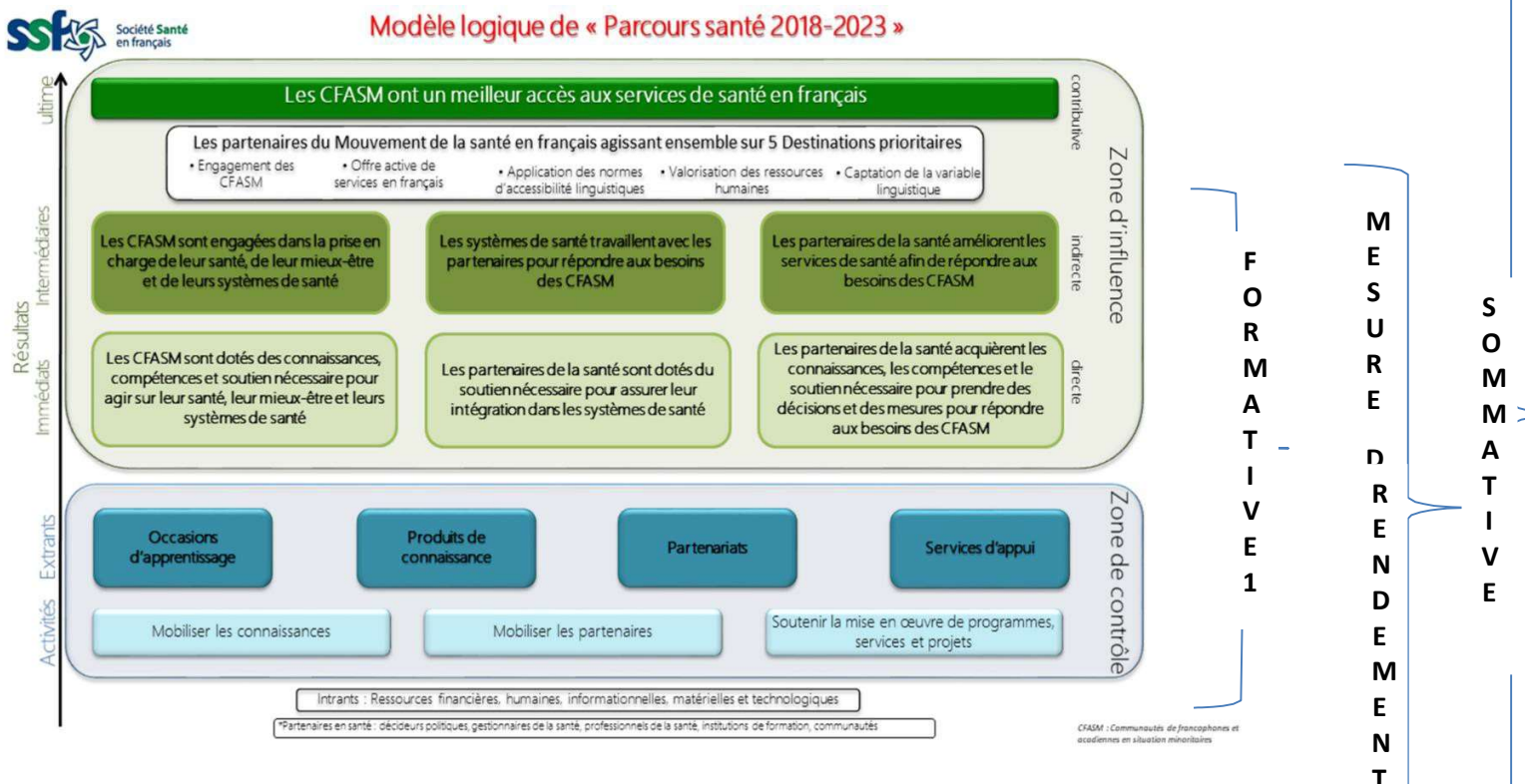
<sup>1</sup> World Health Organization (WHO). The five partners are health managers, health practitioners, academic institutions, policy makers, and communities.

1. **Relevance:** This means determining how well the Parcours santé 18-23 program corresponds to the needs of Francophone and Acadian minority communities (FAMCs) in terms of French-language health services in the provinces and territories.
2. **Internal and external coherence:** Firstly, this means measuring any complementarity, redundancy, and synergy that exists among the different elements of the program's logic model. Secondly, it means determining the connection between the program and the other actions taken to address French-language health.
3. **Efficiency:** This means determining whether the inputs (human, financial, organizational) and the outputs were successful in achieving the desired results.
4. **Effectiveness:** This means measuring how successful efforts have been based on the objectives initially set (in terms of the short-term and intermediate desired outcomes).
5. **Impact/sustainability:** Evaluating the direct and indirect impacts of the program (in terms of the final outcomes), and assessing how sustainable they are.

### How does the logic model of Parcours santé 18-23 figure into the evaluation?

The logic model of Parcours santé 2018-2023 lays out the different types of activities, outputs, and desired outcomes for the next five years. It is divided into two main sections: the zone of control (which represents what we are doing and producing) and the zone of influence (which represents the changes we want to make directly and indirectly).

All projects are associated with a given program destination. Because this is what we want to improve over the medium term, it is good to be able to bring different program elements into alignment, including the outcomes of the logic model and the measurement indicators in the evaluation.



## Who are we inviting to the discussion groups?

For the summative evaluation (2022-2023), SSF is inviting all five partner groups in the pentagram to participate in discussion groups held by region. We will also meet with the people who lead projects affiliated with SSF, as well as key partners, in order to discuss their involvement in and understanding of the projects and the networks. These individuals will address the issues of impact, continuity, and sustainability.

## What are we aiming for in the interviews?

The key stakeholders will be interviewed in order to help us obtain informed opinions and perceptions grounded in experience. These interviews will mainly involve network partners, including those in the pentagram.

- ▶ Executive directors of French-language health networks in Canada
- ▶ Key members of SSF, including the board of directors
- ▶ Sponsors of projects affiliated with SSF